

A young boy in a grey school uniform with a white collar is smiling and pouring pink liquid from a red cup into a black bowl. He is holding a wooden spoon. The background is a blurred school setting with other people.

# JOIN CHALLENGE PARTNERS

**2026/27**

**Quality Assurance, Fresh Perspectives,  
and Develop your Leaders**

# CONTENTS

<b>Welcome</b>	<b>3</b>
<b>Join Our Partnership</b>	<b>4</b>
<b>School Improvement Programmes and Networks</b>	
<b>Quality Assurance Review</b>	<b>6</b>
<b>Growing the Top</b>	<b>8</b>
<b>SEND Developmental Peer Review</b>	<b>10</b>
<b>Hub Collaboration</b>	<b>12</b>
<b>Trust Development Programmes and Networks</b>	
<b>Trust Peer Review</b>	<b>14</b>
<b>Trust Leaders' Network</b>	<b>16</b>
<b>National Network of Excellence</b>	<b>18</b>
<b>Fees and Package Options</b>	<b>20</b>

## Welcome



### **Dr Kate Chhatwal OBE, CEO Challenge Partners**

Since 2011, Challenge Partners' unique blend of supportive challenge, experiential leadership development, purposeful collaboration and knowledge sharing has inspired and informed innovation and continuous improvement in schools and trusts across England, upskilling thousands of leaders in the process. Well over a million children have benefitted as a result.

Our national partnership consists of over 485 schools and over 130 trusts across the country. Encompassing a vibrant and diverse commonwealth of schools of different governance types, phases, and stages of development, we are united by the belief that working together is the best way to reduce educational inequality and enhance the life chances of all children.

Our suite of programmes inform continuous improvement and develop leadership capacity in schools and trusts. They enable us to identify, accredit and share excellence, spreading strong and innovative practice quickly across the country.

This ensures effective support reaches the students in greatest need. In a resource-starved system, it means leaders neither face common challenges alone nor waste time looking for answers to problems others have already solved.

Our networks and programmes provide a safe, fun and enriching space for professional reflection, experiential learning, dialogue and collaboration, for school and trust leaders to test and co-create practical strategies for improvement.

And it works! Performance data, independent evaluation and feedback from school and trust leaders confirms that long-term participation in Challenge Partners drives sustained improvements for schools and pupils. We are particularly proud that independent longitudinal analysis reveals how primary and secondary schools in Challenge Partners have improved outcomes for disadvantaged pupils over the last five years, bucking the trend of national decline.

On the following pages you can read more about how joining our powerful and growing partnership will nourish you, your institution, and everyone within it.

Contact the team on 020 7803 4970 to find out how Challenge Partners can accelerate your improvement and leadership development objectives. We look forward to welcoming you to our vital collective endeavour.

**Dr Kate Chhatwal OBE CEO, Challenge Partners**



# Join our partnership

## Accelerating continuous improvement for schools and trusts.

Schools and trusts join Challenge Partners for quality assurance, fresh perspectives, and to develop their leaders.

Within the partnership, schools and trusts have unparalleled opportunities to engage in immersive, on-site learning, and collaboration that tackles education's biggest challenges. Through collegiate conversations and co-creating place-based solutions at local, regional and national levels, Challenge Partners' programmes and networks create honest and open dialogues that drive meaningful improvement.

School and trust leaders tell us that Challenge Partners creates a unique and challenging yet safe way to invite peer education leaders into their settings to share, challenge and validate why they are doing things in the way that they are, and to receive honest, high-quality feedback. It is hard-edged collaboration between open and honest critical friends, with expert facilitation to lay the difficult questions on the table.

Schools and trusts remain in the partnership for not only an annual external check on quality of education within schools, but also for the unrivalled experiential learning and development it provides for their leaders at all levels, and for the strength and shortcuts they get from having access to excellent practice and local and national colleagues predisposed to share it.

**You'll find information about each element of our programmes and networks in the following pages. Call or email the Challenge Partners team to discuss your needs and how joining Challenge Partners can help. We'll work closely with you to select the best options for your school or trust, and ensure you get the optimum value.**

**partnershipsteam@challengepartners.org  
020 7803 4970**

### STEP ONE: Select one or more school improvement programme(s) for your school(s):

#### Quality Assurance Review

Challenge Partners' sector-leading peer audit, with its laser focus on teaching and learning, curriculum and outcomes, narrowing achievement gaps and leadership at all levels. The review also provides experiential leadership development as your leaders are trained and coached by school evaluation experts to review other schools.

#### Growing the Top

Connect with other strong schools in trios or quads to deepen evaluation, gain external perspectives and address shared improvement challenges. Through facilitated visits and inspiring events, leaders build lasting collaboration that sharpens leadership and supports continued excellence.

#### SEND Developmental Peer Review

Strengthen whole-school SEND practice by gaining clear priorities, fresh insight and practical solutions through expert-guided collaboration, structured self-evaluation and immersive peer visits. Leaders build meaningful professional connections and return with actionable strategies to drive improvement in their own settings.

### STEP TWO:

#### All schools join a Hub of Collaboration

Join a local, regional or virtual hub to address shared improvement priorities. With funding and support from our central team, work collectively to develop solutions, strengthen your networks, and achieve common goals, enhancing the impact on your pupils and wider community.

#### All schools and trusts join our National Network of Excellence

Unlock connections with mission-aligned education leaders across the country, becoming an active voice within the partnership. Unite through whole-network conferences, hear from inspiring expert speakers, and discover best practice from schools with accredited Areas of Excellence through our School Support Directory.

### STEP THREE: Trusts can also benefit from trust-level programmes:

#### Trust Leaders' Network

Gain powerful insights for your trust leadership team from a carefully crafted programme of trust visits, webinars and an annual national conference, each focusing on different aspects of trust development/practice. CEOs and DCEOs are nourished and developed at our leadership residential.

#### Trust Peer Review

Celebrate strengths and gain actionable insights to move your trust forward through a three-day expert-led peer review tailored to your trust development needs. Develop your leadership and gather fresh perspectives by reviewing other trusts.

# Quality Assurance Review

## Honest and insightful conversations driving school improvement.

The Quality Assurance Review (QA Review) is Challenge Partners' sector-leading peer audit, with its laser focus on teaching and learning, inclusion, curriculum and outcomes, narrowing achievement gaps, and leadership at all levels. Most schools in our partnership opt to have a QA Review each year, using it as a catalysing comma in an ongoing school improvement dialogue among colleagues and peers.

Our popular flagship programme is a rigorous, three-day peer evaluation. Headed by an expert Lead Reviewer, reviews are conducted by a trained team of headteachers and senior leaders from schools within Challenge Partners.

Working with the host school, they celebrate the school's strengths and identify areas for development, looking closely at the experiences of pupils from disadvantaged backgrounds or with additional needs.

All activities are carried out with peer reviewers working closely alongside the host school's leaders. Each element of the evaluation is conducted together, with internal and external leaders paired to explore practice and engage in purposeful professional dialogue throughout. This collaborative approach means every output is agreed with the school, resulting in a rigorous, shared evaluation that supports improvement and offers rich professional development.

Schools participating in the programme host an annual review and reciprocate by sending their headteachers and senior leaders to review other schools within the partnership, providing meaningful professional development for everyone involved. Reviewers select their review based on their development aims, and gain expertise from the Lead Reviewer while learning from a range of colleagues in the review team and host school.

Schools also have the option to apply for Area of Excellence accreditation to celebrate exceptional practice and share it with the partnership and their networks.

### The Quality Assurance Review offers you:

- An audit of strengths and development areas as part of your evaluation and school improvement cycle
- Unique real-world leadership development opportunities for leaders and senior staff through hosting a review, and reviewing other schools, with coaching from the Lead Reviewer — an Ofsted inspector or similarly experienced professional with significant experience in school improvement
- A review report to highlight strengths, areas for development, and next steps
- Optional Area of Excellence accreditation to celebrate with your staff, and share across the partnership

In 2024/25

**99%** of schools said participating in the QA Review had left their school in a better place

In 2024/25

**90%** of reviewers brought an idea back to their own schools to discuss as a result of taking part in a QA Review



“

This is my first year as Executive Headteacher, and as such, I used the review to empower my emerging senior leaders, practising my skills of delegation. It provided me with an opportunity at times to sit back and observe the process and to watch my leaders in action. This in turn has provided me with useful insights for the next development steps. It always feels like a privilege being part of a QAR. It is a joy to see our school through the eyes of others, and to have dedicated time and space to engage in deep professional conversations and reflections

Claire Purcell, Executive Headteacher,  
Dulwich Hamlet Junior School

Book your Quality Assurance Review Now  
CONTACT US: 020 7803 4970  
partnershipsteam@challengepartners.org

# Growing the Top

## Helping strong schools sustain and extend their excellence.

Growing the Top was founded on the belief that no school remains excellent by standing still. It is uniquely designed to inspire and inform improvement in strong schools with systemic strengths to share and the humility to appreciate there's always more to learn and do.

Strong schools are carefully matched using a variety of factors to form trios or quads where every school has something to share and learn.

Expertly facilitated visit days allow host and peer leaders to explore areas of systemic leading practice and address school improvement challenges. The host school receives external appraisal and support to move forward. Visitors learn from observing and unpicking leading practice in other strong schools and contexts, finding out what has worked for them on their path to excellence.

The headteacher and another senior leader (always the same one) from each school attend every visit, so trust and collaboration builds over time. The relationships formed often extend to other teachers and leaders and sustain beyond the programme lifespan, and participants have relished the chance to learn and collaborate with peers from different regions.

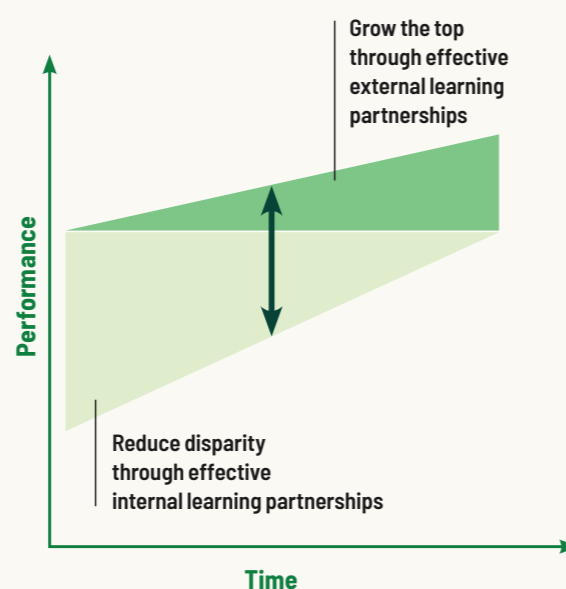
Participants also take insight and inspiration from whole-cohort events, featuring expert speakers from academia, the corporate world and the education sector. School leaders are challenged to reflect on their own leadership approach, discuss shared priorities with other leaders and examine how to keep adapting their practice and advancing excellence.

### Growing the Top offers you:

- Meaningful collaboration and growth, working with carefully matched schools to complement and learn from each other's strengths and differences
- Experiential learning on expertly-facilitated school visit days throughout the year for your headteacher and another senior leader
- Support from peer leaders on your school's development areas, and the chance to observe and learn from exceptional practice in other top performing schools and contexts
- Inspiration and stretch at whole-cohort events offering new ideas and provocation

Consistent with our Upwards Convergence model, Growing the Top stimulates strong schools to rise higher, and the whole system to move up.

### Upwards Convergence:



**Lots of reflection, challenge and suggestions. Everyone left with strategies for next steps in their schools. The school felt supported. Really strong social capital**

Samantha Saville, Facilitator

In 2024/25

**94%** of participants plan to use something they have seen, learned or discussed in their own school's school improvement journey in the longer term

In 2024/25

**96%** of participants have seen or learned something they would like to share with other senior leaders in their school

[READ MORE about the programme's impact](#)



# SEND Developmental Peer Review

## Supporting schools to improve their provision and practice for pupils with SEND.

There is an urgent need to improve the quality of SEND provision; the children in our classrooms now cannot wait for system reform. Our SEND Developmental Peer Review enables schools to benchmark their SEND provision, access high-quality immersive learning in partner schools, and reap the benefits of collaborative peer support to drive whole school improvements in SEND practice.

From 2026/27 we will be welcoming special and Alternative Provision schools alongside mainstream schools on this programme. If this is of interest to your special or AP school or trust, please contact us to explore this opportunity.

Developed with global expert David Bartram OBE and experienced practitioners from the 100+ specialist schools already in our broader partnership, the SEND Developmental Peer Review is carefully designed to support schools in establishing and enacting impactful next steps to enhance their SEND provision. Schools examine their current practice with support from peer SENCOs and school leaders, guided by an expert Lead Facilitator with their own SEND expertise to share.

Participants work in carefully matched trios or quads, creating a trusted network of peers beyond their locality. Colleagues share expertise, co-create solutions, and address common challenges in a supportive, honest, and constructive environment. They celebrate and share areas of strength, and push forward areas for development.

Structured self-evaluation using the **EvaluateMySchool** platform enables schools to identify what's working, pinpoint development areas, and create a visit day structure tailored to their needs - all with coaching and support from their Lead Facilitator.

Immersive SEND peer visit days enable visiting SENCOs and school leaders to observe strong practice through learning walks, pupil voice and review team reflection discussions, inspiring new ideas and improvements to take back to their own settings.

The headteacher (or member of SLT responsible for inclusion) and SENCO of each school attend all programme activities together, including every SEND peer visit day. This creates strong relationships between schools in each trio/quad, and provides precious protected time for the headteacher/senior leader and SENCO to work closely together so that learnings from the programme can be integrated into their whole school policies and practices.

### The SEND Developmental Peer Review offers you:

- High quality, supportive, honest and open discussions with peers around areas of SEND strength and challenge, with the opportunity to collaborate on common challenges and develop tailored approaches and solutions
- Ring-fenced time for SEND, including precious time for the SENCO to work with their own headteacher (or a member of SLT responsible for inclusion) to gain ideas, reflect on their own practice, and gain clarity on how to move their SEND strategy forwards
- Opportunities to be immersed within other schools, see good practice in action through learning walks, discussions with pupils, and tailored learning activities
- Structured self-evaluation, action planning and progress monitoring of your approach to SEND using the EvaluateMySchool platform, which also guides the agenda for visit days
- Support throughout the year from expert Lead Facilitators, who guide discussions, signpost effective practice, and share high quality resources



The discussion was rich and the host school felt supported and reinvigorated in how they might approach this going forward. There was a great deal of professional respect in the room and everyone made a contribution

Jayne Franklin, Lead facilitator

In 2024/25

**97%** of participants had seen, learned or discussed something that will support their own school to improve SEND provision in the longer term

In 2024/25

**92%** of participants had seen, learned or discussed something that will support their own school to improve SEND provision in the short term



Colleagues challenged and validated our judgements, and more than once we raised our own gradings after others held a mirror up to what was actually happening

Catrin Ayers, Headteacher, West Durham Junior School

Interested in learning more?  
**CONTACT US: 020 7803 4970**  
[partnershipsteam@challengepartners.org](mailto:partnershipsteam@challengepartners.org)

# Hub Collaboration

## Support for school improvement through purposeful collaboration with schools and trusts in a local, regional or virtual hub.

Collaboration is an essential tool for trusts and schools striving to achieve the best for their students.

Schools in our Network of Excellence join forces in collaborative hubs, which bring together school leaders who share a commitment to excellence. Each hub receives dedicated funding to tackle shared school improvement and professional development priorities, enabling them to do and achieve more together than any could on their own.

Hubs are usually formed on a local or regional footprint, but some choose virtual means to foster collaboration across greater distances (which has proved a particularly popular way of connecting dispersed specialist settings). They vary in size and are located across England, spanning from Tynemouth in the North East to Cornwall in the South West. Each hub is locally determined and has its own distinct feel and approach. What they all share is an unwavering commitment to collaborative continuous improvement.

Hubs receive dedicated support from the Challenge Partners central team to ensure they are set up for success. Each hub is locally led by a Senior Partner and Hub Manager, who are usually serving senior leaders in strong schools or trusts.

Schools in hubs benefit from a wide variety of activities, decided by the schools collectively. For example, they may choose to:

- Address agreed school improvement priorities by sharing best practice, undertaking research together, forming subject groups, or engaging in joint practice development
- Commission expert speakers or training on topics relevant to their shared priorities
- Develop leadership through additional locally-delivered Challenge Partners programmes

### Collaboration in a hub offers you:

- The chance to join forces with other schools and leaders to address common challenges
- Funded school improvement and leadership development activities shaped by your needs and priorities
- Dedicated support from your Senior Partner, Hub Manager, and the Challenge Partners central team
- Exclusive access to Challenge Partners' locally-delivered programmes:
  - **Leadership Residency Programme:** Structured immersion programme for senior or middle leaders offering practical learning, gathering best practice, and focused development
  - **Middle Leaders Quality Assurance Review:** A curriculum-focused peer review which develops subject and middle leadership using Challenge Partners' flagship methodology

Hubs create meaningful, hard-edged collaboration between schools, enabling them to share knowledge, learn from one another, and work together to drive continuous improvement.

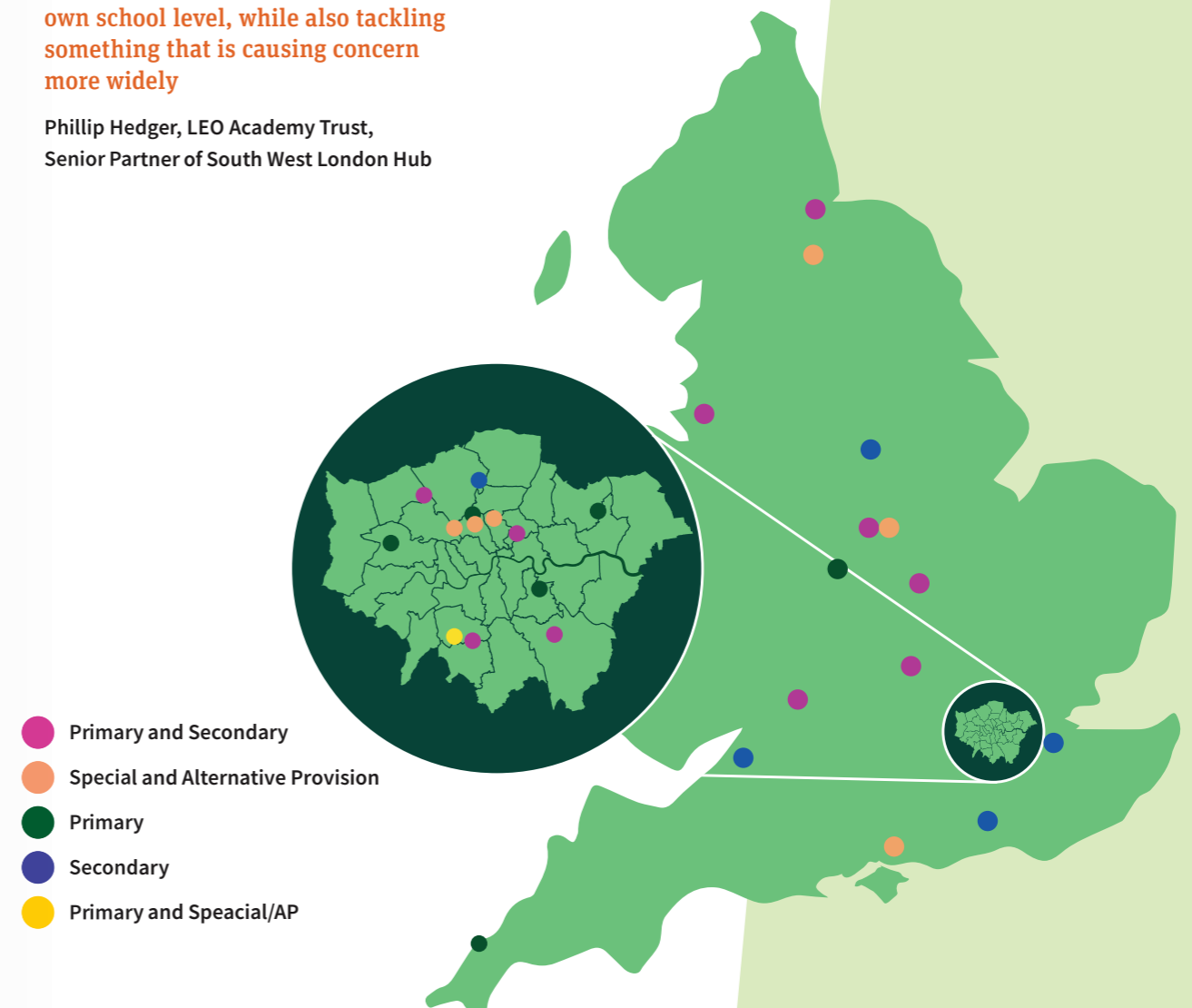


**The benefit of the Hub network is that schools know each other, each other's context and the local context well. When they're working together... there is genuine alignment to solve a problem at their own school level, while also tackling something that is causing concern more widely**

Phillip Hedger, LEO Academy Trust, Senior Partner of South West London Hub

You can join a collaborative hub at any point throughout the partnership year. Find your nearest hubs on our website's Hub Map

**CONTACT US** to discuss your best hub options and determine which hub to join  
 020 7803 4970  
[partnershipsteam@challengepartners.org](mailto:partnershipsteam@challengepartners.org)



# Trust Peer Review

## Advance your trust with actionable insights on the areas you want to develop.

All trusts are different. The challenges they face vary with location, maturity and size, as well as character, ethos, and approach. But all trust leaders share a singular ambition to drive school improvement and create better outcomes for the children and young people they serve.

Aligned to the Confederation of School Trusts' Strong Trusts Assurance Framework, our innovative Trust Peer Review (TPR) evaluates your trust's effectiveness in achieving that ambition and your specific development goals.

This expert-led three-day review enables trust-wide development on priorities you identify through peer challenge and collaboration. It celebrates strengths, brings new insights, and identifies actionable next steps in a written report. Recommendations to strengthen your trust are based on evidence gathered from across your trust by a trained peer review team guided by a skilled Lead Reviewer.

The external team links up with host leaders to understand each trust's unique history, context, and approach. Host leaders are encouraged to involve their colleagues and focus on the challenges they need to address to move forward.

**CONTACT US** to learn more and join today  
020 7803 4970  
partnershipsteam@challengepartners.org



Challenge Partners trains trust leaders as peer reviewers to review other school trusts, providing experiential development in leadership and evaluation skills, as well as the chance to learn from trusts in different contexts, and magpie ideas to take back to their own trust.

We encourage trusts to join the Trust Peer Review nationally but also welcome the opportunity to work with groups of trusts to deliver regional reviews.

**“**Efficiency, effectiveness, strategic thinking... My horizon has been irrevocably stretched by the phenomenal people I have just worked with. This is the best professional learning experience I have had as a CEO in the last five years

David Coache, CEO,  
Bengeworth Multi Academy Trust

### The Trust Peer Review:

- Aligns with Confederation of School Trusts' Strong Trusts Assurance Framework
- Evaluates your trust on its own terms – it is done with, not to, your trust
- Is bespoke to your needs, focusing on development priorities defined by you
- Captures and shares effective practice while providing actionable, evidence-based suggestions of how to improve
- Provides powerful training, unrivalled immersive CPD, and insight for reviewers
- Identifies opportunities for collaboration and connection, deepening relationships between trusts at multiple levels, and building a shared sense of responsibility for education, children, and young people

**“**

There was a tangible sense of mutual respect and togetherness, aligned with careful and diligent attention to detail and relationships that ensured that the process was highly effective, balanced and robust. I felt this worked well, provided a shared understanding and framework, a common language and a sector benchmark to inform discussion. Workload was appropriate and activities and discussions were meaningful

Jill Messham, CEO,  
Vantage CE Academies Trust

In 2024/25

**100%** of host trust respondents felt that participating in the Trust Peer Review will improve the life chances of pupils, especially those from disadvantaged backgrounds or with SEND

In 2024/25

**100%** of TPR Reviewers agreed that participating in the Trust Peer Review process contributed to their leadership development and CPD

# Trust Leaders' Network

## A catalyst for the development of your trust and leaders.

Gain powerful insights for your trust leadership team from a carefully crafted programme of trust visits, webinars and an annual national conference, each focusing on different aspects of trust development/practice.

Trust leaders benefit from this practitioner-led safe space to connect and network, while gaining deep insight into effective approaches to trust development. With a focus on honest, purposeful exchanges, it creates the perfect environment to share challenges, insights, and solutions that truly resonate with your trust.

The Trust Leaders' Network connects trust leaders of all levels and at all stages of maturity, ensuring you can learn from those at a similar stage or steps ahead. Your whole trust team is part of the network – not just one individual – meaning opportunities are shared and can simultaneously benefit multiple colleagues in your trust.

Visit up to four trusts across the year, each carefully selected to present a different aspect of effective practice or trust development. Each visit is expertly facilitated by recently-retired CEOs of successful trusts, and designed for optimal learning and collaboration among peers who share our ethos of hard-edged collaboration to support mutual improvement.

Your trust leaders will also benefit from a series of webinars to explore best practice and connect with leading thinkers and business experts.

We know effective trust leadership is a team effort, so you are welcome to involve different members of your trust team to trust visits and webinars to ensure the right insights and strategies reach those who can put them into action.

CEOs and DCEOs in the network can also strengthen their leadership and personal impact on a personally and professionally nourishing two-day residential.

The TLN's spiral curriculum explores recurring and evolving themes from different perspectives, while allowing space to tackle urgent and novel challenges. Themes include:

- Growth
- Developing and sustaining a one-trust culture
- Building and scaling an effective model for central operations and school improvement
- Balancing alignment, autonomy and innovation
- Effective governance
- Growing your people
- Maximising the trust dividend



**It was a pleasure to visit LEO which is a trust I have heard a lot about but never visited. From the CEO talk to the discussions about digital strategy and the implementation of it in the classrooms**

Lorraine Greco, CEO, OWN Trust, on a trust visit to LEO Academy Trust



**A great opportunity to step out of the day job and network and reflect**

Claire Moloney-Banks, Deputy CEO, The Olympus Academy Trust, on the Trust Leaders' Conference



The Trust Leaders' Network enables you and other members of your trust leadership team to:

- Gather actionable insights by attending a programme of purposefully-planned, expertly-facilitated visits to trusts across the country
- Train leaders in our pioneering Trust Peer Review (TPR) methodology and join our pool of reviewers to go out and conduct TPRs
- Connect with outside experts and business leaders through our webinar programme
- Gain inspiration and influence policy and practice at our annual Trust Leaders' Conference
- Nourish yourself and enhance your leadership impact at our revitalising Trust Leaders' Residential
- Contribute to sector improvement as part of Challenge Partners' national Network of Excellence, made up of over 485 schools and 130 trusts



**Excellent day, I got an awful lot of affirmation for the things we are doing in our Trust. I also gained ideas for improvement**

Sarah Finch, CEO, Marches Academy Trust, on a trust visit to United Learning

In 2024/25

**97%** of trust leaders planned to use something they had seen, learned or discussed on a trust visit, in their own trust in the longer term

In 2024/25

**100%** of Trust Leaders' Conference participants agreed or strongly agreed that they heard/learnt something that will influence how they work within their own trust

# National Network of Excellence

## Excellence sharing and inspiration in a vibrant professional learning network of hundreds of school and trust leaders.

All schools and trusts who join Challenge Partners benefit from our national Network of Excellence.

This knowledge-sharing space offers opportunities to hear about leading practice and find peer support for sustainable school improvement.

It includes an online programme of inspiring speakers from the education sector and beyond, addressing topical and enduring themes, such as curriculum, disadvantage, diversity and SEND.

### The Network of Excellence includes:

#### National Network Conferences

Twice a year, we bring the whole network together online to hear from expert speakers on current and strategically significant topics. Unlike many other webinars our National Network Conferences are a real chance to join in a conversation with high-profile presenters and your peers on key themes.

**90%** of those who evaluated the National Network Conference saw or learned something they would like to share with senior leaders or others in their school



“Challenge Partners is a vehicle for continuous improvement, for both the school and the staff. No school has 'cracked it'—there's always more to do, and we're grateful to Challenge Partners for helping us on that journey.

Vicky Barwell, Headteacher,  
Rushey Mead Academy

#### Sharing Leading Practice

Challenge Partners has the unique practice of accrediting Areas of Excellence through the Quality Assurance Review. Accredited practice is shared 'warts and all', so other schools and trusts can learn about the process and how challenges were overcome, as well as the successful end result. This unlocks pockets of excellence from their locality into the national network so that leading practice becomes common practice through actionable insights and support.

This sharing takes place across the national and local networks at events, and through hub-led Area of Excellence days throughout the year.

#### Exclusive online resources

Our exclusive School Support Directory on the Challenge Partners website is a rich knowledge exchange hub where trust and school leaders, at all levels, can enjoy exclusive access to curated resources, all carefully categorised by theme.

Partners can access recordings of our webinars featuring our expert speakers, and leading practice sessions readily available to be integrated into their own CPD programmes as valuable input and discussion prompts.

Our School Support Directory helps partners find and connect with leaders in schools with Areas of Excellence they'd like to explore.

Programme and network handbooks, guidance, and supporting documents are all available online to ensure partner schools and trusts get maximum benefit from their chosen activities.

#### Regular newsletters

Half-termly newsletters are sent to all partner schools to share knowledge, resources, and news of upcoming events.

“I knew there were good resources but now I have spent time delving more deeply, I can see how many of our schools would benefit

Michele Marr Chief Executive, Castle Phoenix Trust

# 2026/27 Fees and Package Options

Subscribe as a school or create a comprehensive package for your trust from the menu below. Our team is ready to help find the right options for you; speak to them about your needs and they'll help you get best value from the flexibilities and discounts on offer.

Benefit from our lower early bird prices, multi-year subscriptions, and maximum cap for individual schools.

Trusts can benefit additionally from:

- Swapping in different schools each year to participate in any of our school improvement programmes if you take out a multi-year subscription
- Savings on package subscriptions where the total fee exceeds £24,000 per annum
- Sharing participation in our Trust Leaders' Network across the trust, with more than one trust leader able to attend trust visits and webinars
- Access to all the benefits of our Network of Excellence for each participating school within your trust, and your trust central team

Trust Programmes	Trust Leaders' Network	Trust Peer Review
<b>National Network of Excellence:</b> A professional learning community of more than 485 schools and over 130 trusts	✓	✓
<b>National Trust Leaders' Conference:</b> With keynote speakers from education and business	✓	✓
<b>Training to become a Trust Peer Reviewer:</b> Expert-led training in trust evaluation and opportunity to visit other trusts as a peer reviewer	✓	✓
<b>Trust Leaders' Network:</b> Facilitated trust visits to share practice, explore strategic challenges and build a peer network, with a programme of expert webinars	✓	
<b>Two day leadership residential for trust CEOs and DCEOs:</b> Recharge and strengthen your leadership and personal impact on our impactful two-day residential	✓	Optional for additional £1,950
<b>Trust Peer Review:</b> Expert-led three-day review providing a written report and actionable insights to accelerate trust development, tailored to your context and priorities		✓
<b>Price</b>	£4900 (or £2,950 without residential)	£8,150
<b>Additional Benefits</b>	<b>5% off and a complimentary place on the Trust Leaders' Network</b> (excluding residential), when your total trust fee (including school and trust programmes) exceeds £24,000 per annum	

School Partnership	Full Partners
Participation in our national Network of Excellence - a professional community of over 485 schools <ul style="list-style-type: none"> <li>■ National Network Conferences</li> <li>■ Sharing of Leading Practice</li> <li>■ Exclusive peer support directory and website</li> </ul>	✓
Local, regional or virtual collaboration in a hub: <ul style="list-style-type: none"> <li>■ Funded activity on shared challenges and improvement priorities</li> <li>■ Exclusive access to locally-delivered Challenge Partners leadership development programmes</li> </ul>	✓
Choice of school improvement programme (choose one): <ul style="list-style-type: none"> <li>■ <b>Quality Assurance Review:</b> Expert-led peer review driving continuous improvement in school leadership, curriculum, pedagogy, and narrowing achievement gaps</li> <li>■ <b>Growing the Top:</b> Helping strong schools sustain and extend their excellence</li> <li>■ <b>SEND Developmental Peer Review:</b> Supporting schools to improve their practice for pupils with SEND</li> </ul>	✓  (Your subscription fee includes your choice of programme and you can add one or more additional programmes for £2,950 each by 15 May or £3,250 thereafter)
<b>Price</b>	Early Bird Fee, by 15 May: <b>£8.99</b> per pupil, minimum fee of <b>£3,850</b> and maximum fee of <b>£9,950</b>  Full Fee, after 15 May: <b>£9.20</b> per pupil, minimum fee of <b>£4,250</b> and maximum fee of <b>£10,450</b>
<b>Multi-year deal</b>	A two-year deal, with the second year fees for 2027/28 'locked in' at 2026/27 Full Fee
<b>Small school provision:</b> Mainstream and AP schools of 150 or fewer pupils, and special schools of 40 or fewer pupils	£2,750 before 15 May (£3,250 after 15 May) per annum, for a commitment of two years in which the chosen school improvement programme can be accessed for one year  Senior leaders can continue to go out on Quality Assurance Reviews across both years

VAT is added to all prices

Speak to the team today:  
020 7803 4970  
partnershipsteam@challengepartners.org



Oxford House  
49 Oxford Road  
London N4 3EY

[www.challengepartners.org](http://www.challengepartners.org)  
[partnershipsteam@challengepartners.org](mailto:partnershipsteam@challengepartners.org)  
020 7803 4970

Registered charity number: 1149266  
Company number: 8048330